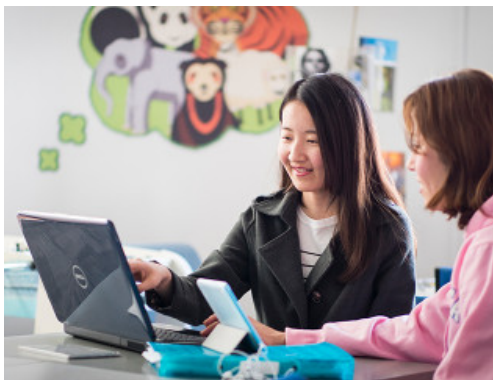


# New Zealand Certificate in English Language (Academic) (Level 4)



## Want to improve your English skills?

Study English at Otago Polytechnic to prepare for further study, make new friends and experience New Zealand culture.

When you study with us you will:

- learn English from teachers who are very patient and understanding
- work in small groups to practise your speaking
- meet native speakers and listen to guest speakers
- gain study skills through self-directed learning and group work.

This Certificate is for upper-intermediate English speakers who want to do further English-language or subject study in an academic context. It is a nationally-recognised qualification. It can lead to academic study at Otago Polytechnic, or you can use it to transfer to other study institutes in New Zealand.

[Find Auckland Campus study block dates here >](#)

## Entry requirements

At our Auckland International Campus, this programme is delivered through Future Skills Academy in a sub-contract arrangement between Otago Polytechnic and Future Skills.

- You must provide:
  - New Zealand University Entrance OR
  - Overall Academic IELTS 5.5 (achieved in one test completed in the last two years)
    - Reading band 5.0
    - Writing band 5.5
    - Speaking band 5.0
    - Listening band 5.0, OR
  - Acceptable alternative evidence of the required IELTS ([see here for NZQA proficiency table](#) and [here for list of recognised proficiency tests](#)).
- We will test you when you arrive to ensure that we offer you the correct level of English tuition.

**Location** Auckland  
This programme is also offered at our Dunedin Campus. Visit [op.ac.nz](http://op.ac.nz) for programme details.

**Duration** 16 weeks full-time  
**Delivery** Face-to-face learning on campus in Auckland.

**Credits** 60  
**Level** 4  
**Start** February, April, July and October  
**Apply** Anytime

## What you will learn

When you finish this programme you will be able to:

- understand the main ideas and key supporting details of quite complex spoken and written information on familiar and unfamiliar topics
- take part effectively in sustained, spoken academic conversation
- write detailed, well-developed and quite complex academic texts.

## Your workload

You will be expected to spend about 300 hours per Study Block on your course work. This includes both scheduled class time and self-directed study.

## Study options after English

This programme prepares you for further study in our certificate, diploma and degree programmes. [Find out more information here.](#)

Apply Now